

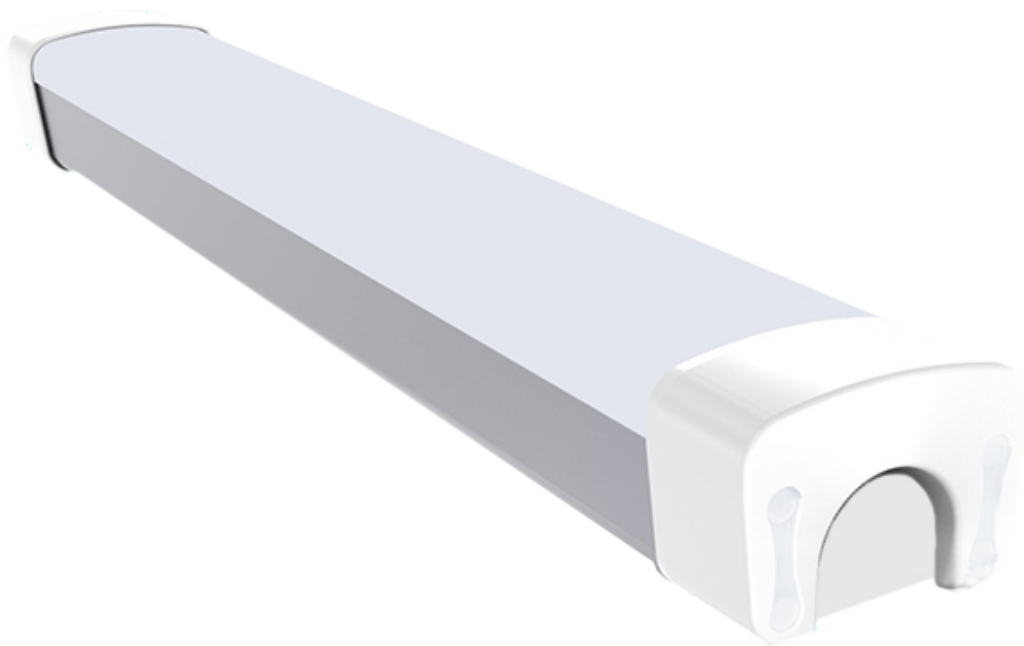
LU GEN4 ELV-BATTEN

BETTER LIGHTING - BETTER PERFORMANCE

ELV 300 / 600, linear batten is an Extra Low Voltage (ELV) LED suitable for 12V and 24V DC power systems.

Compact, high output, IP 65 Waterproof rating and IK 08 impact resistance. A perfect solution for lighting wet and dry areas at a safe voltage..

Available with an OPTIONAL built-in Micro-Wave sensor to activate on motion for security or utility type applications.



IP65

IK08

ELV10-32VDC

DUALCOM TECHNOLOGY LTD

e. info@dualcom.co.nz

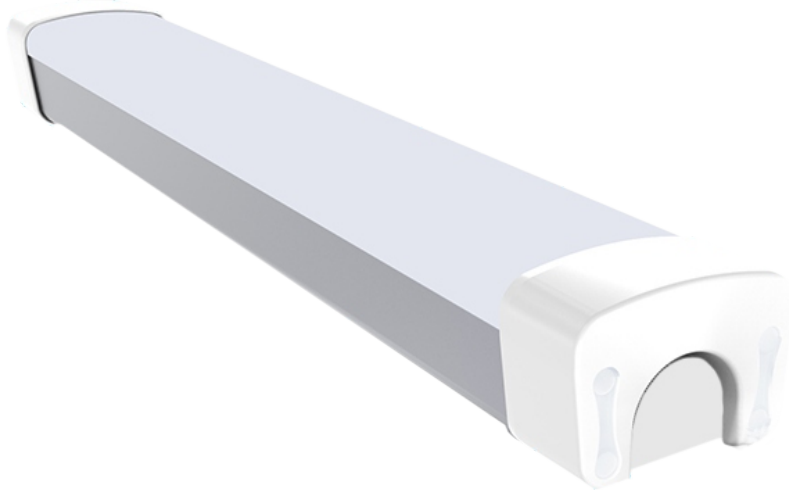
p. +64 9 218 5318



DUALCOM
TECHNOLOGY

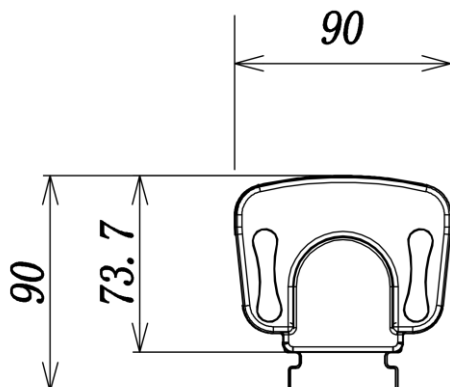
LU GEN4 ELV-BATTEN

BETTER LIGHTING - BETTER PERFORMANCE

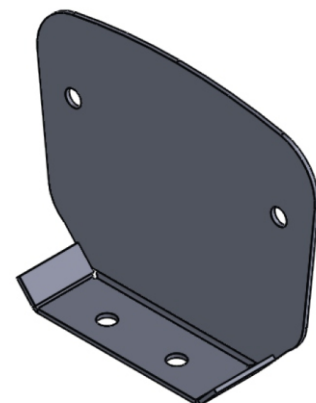


**3 YEAR
WARRANTY**

	EXE300-10W-5K-V2	EXE600-20W-5K-V2
Light Source	LED SMD2835	LED SMD2835
Power Consumption	10W	20W
Colour Temp (CCT)	5000K	5000K
Lumen Output	1000Lm	2000Lm
CRI	>83 CRI	>83 CRI
Micro-Wave Sensor	OPTIONAL	OPTIONAL
Beam Angle	120 degree	120 degree
IP Protection Rating	IP 65	IP 65
IK Protection Rating	Ik08	Ik08
Overall Dimensions	L300*W90*H74mm	L600*W90*H74mm
Construction	AL+PC	AL+PC
Lens Type	Diffused	Diffused
Driver Type	ELV Internal Multivolt	ELV Internal Multivolt
Driver Input Voltage	10-32vDC	10-32vDC
Rated Lifespan	40,000+ hours	40,000+ hours



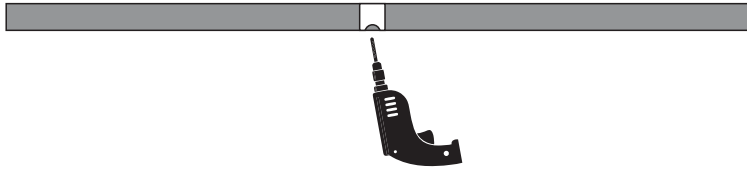
“Optional” Custom Mounting Bracket”



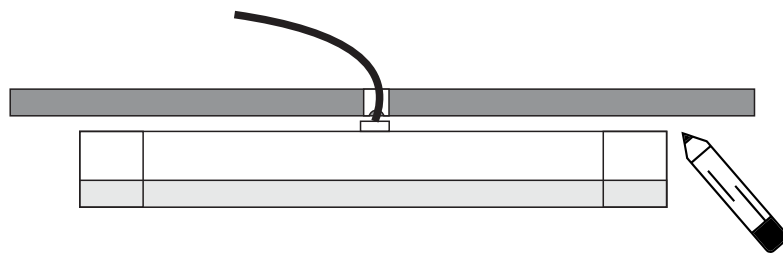
LU GEN4 ELV-BATTEN

BETTER LIGHTING - BETTER PERFORMANCE

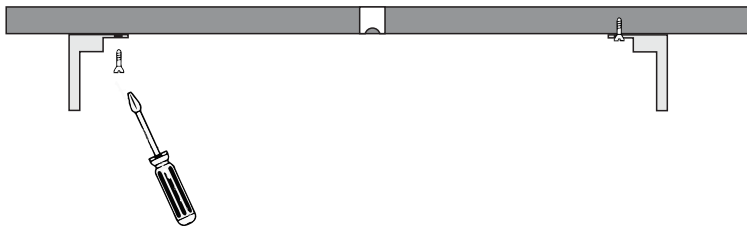
INSTALLATION USING "OPTIONAL" CUSTOM MOUNTING BRACKETS



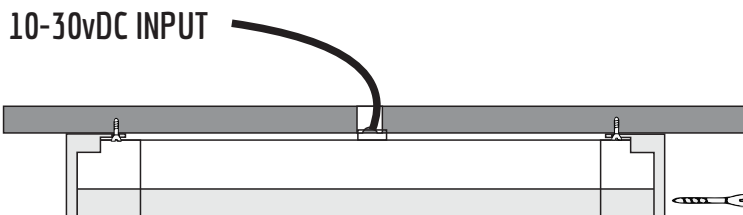
A. Drill 18mm hole for cable. This should be drilled in relation to the centre of light position.



B. With a marker, pencil the batten light edge for new bracket position.



C. Position brackets and fix to wall or ceiling with screws.



D. Attach batten light to new brackets with security screws provided.

*(M4*40mm Torx security screw)*

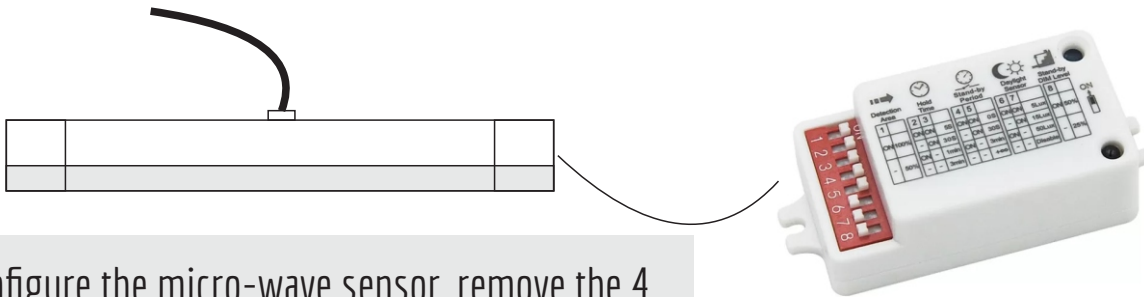


LU GEN4 ELV-BATTEN

BETTER LIGHTING - BETTER PERFORMANCE



Optional Microwave and Daylight Sensor Settings



To configure the micro-wave sensor, remove the 4 screws to release end cap. You will see a white box inside with RED dip switch block.

Detection Area				Hold Time				Daylight Sensor				Operating Mode			
	1	2			3	4			5	6			7	8	
I	ON	ON	100%	I	ON	ON	5S	I	ON	ON	+∞	I	ON	ON	0S
II	-	ON	75%	II	-	ON	90S	II	-	ON	90lux	II	-	ON	30S
III	ON	-	50%	III	ON	-	3min	III	ON	-	15lux	III	ON	-	10min
IV	-	-	25%	IV	-	-	10min	IV	-	-	5lux	IV	-	-	+∞

Example Operation.

After entering room, regardless of day or night (lux) the light will auto switch on to 100% brightness for 10 Minutes (see hold time). After Hold Time is complete, Light will drop to 20% brightness for 30s and turn Off.

Detection area - 1- OFF, 2- OFF (Using 25% detection for smaller areas)

Hold time - 3 - OFF, 4 - OFF (10 minutes)

Daylight sensor, 5 - ON, 6 - ON (Function regardless of being day or night time)

Operating mode, 7 - OFF, 8 - ON (Operation after hold time ends)

DUALCOM TECHNOLOGY LTD

e. info@dualcom.co.nz

p. +64 9 218 5318

www.dualcom.co.nz



DUALCOM
TECHNOLOGY

LU GEN4 ELV-BATTEN

BETTER LIGHTING - BETTER PERFORMANCE

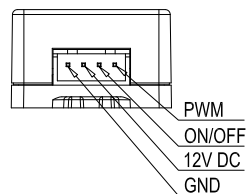
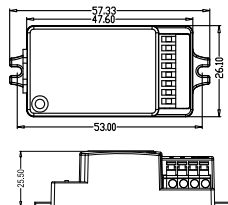
Microwave Motion Sensor



MC002D 6 Sensor Module

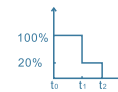


Wall light



SPECIFICATIONS

Operating voltage	12VDC+/-2V
HF system	5.8GHz±75MHz, ISM wave band
Transmitting power	<0.5mW
Power consumption	≤0.5W(stand-by)
Detection Area(Radius)	4m Max.
Max. Mounting height	6m
Hold time	5s/90s/3min/10min
Stand-by Period	0s/30s/10min/+∞
Stand-by DIM Level	20%
Daylight sensor	5lux/15lux/50lux/disable
Operating temperature	-25°C ~60°C
IP rating	IP20



Step dimming



ON/OFF function



Normal motion detecting



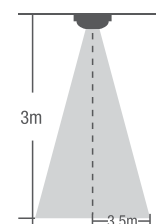
Daylight threshold



5 Year Guarantee

DC
Operation

Detection Pattern (typical)



Detection area*

100%	3.5m
75 %	2.5m
50 %	1.5m
10%	1m

*These data were tested by a 165cm height person and his walking speed is 1m/s.

DUALCOM TECHNOLOGY LTD
e. info@dualcom.co.nz
p. +64 9 218 5318
www.dualcom.co.nz



DUALCOM
TECHNOLOGY