

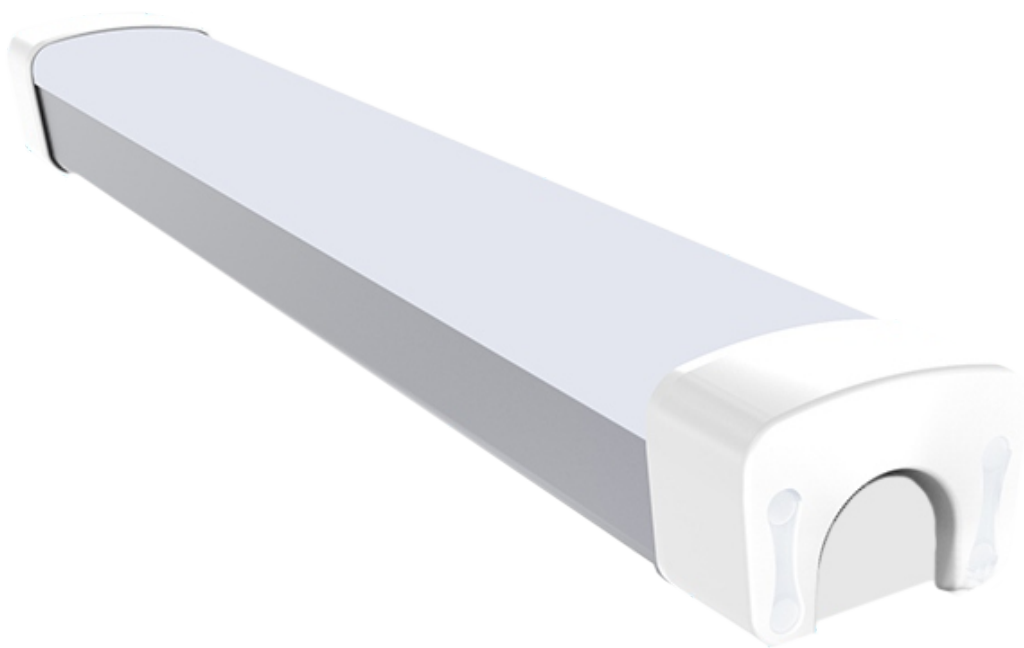
LU GEN4 ELV-BATTEN

BETTER LIGHTING - BETTER PERFORMANCE

ELV 300 / 600, linear batten is an Extra Low Voltage (ELV) LED suitable for 12V and 24V DC power systems.

Compact, high output, IP 65 Waterproof rating and IK 08 impact resistance. A perfect solution for lighting wet and dry areas at a safe voltage..

Available with an OPTIONAL built-in Micro-Wave sensor to activate on motion for security or utility type applications.



IP65

IK08

ELV10-32VDC

DUALCOM TECHNOLOGY LTD

e. info@dualcom.co.nz

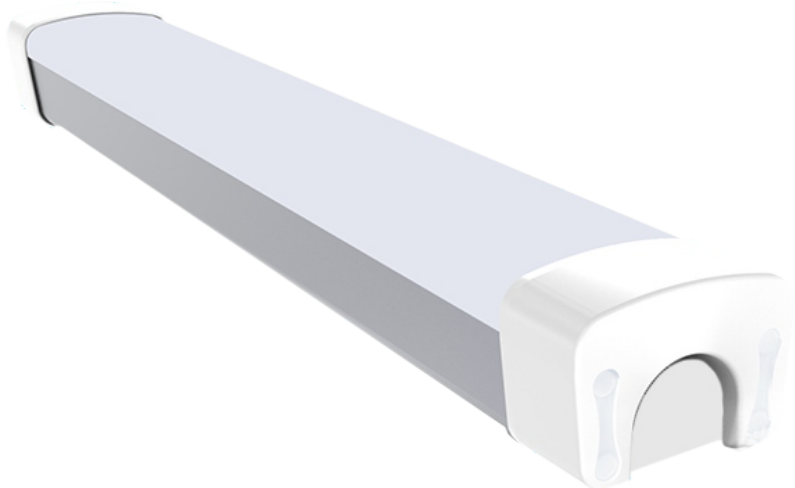
p. +64 9 218 5318



DUALCOM
TECHNOLOGY

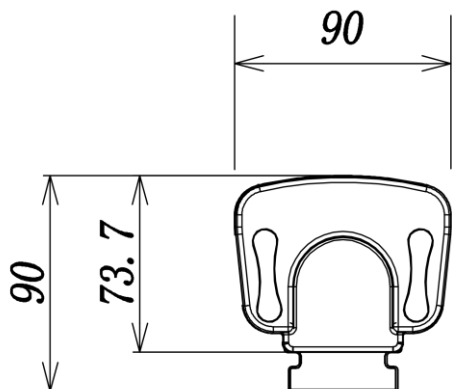
LU GEN4 ELV-BATTEN

BETTER LIGHTING - BETTER PERFORMANCE

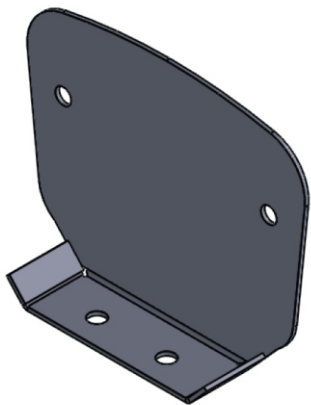


3 YEAR
WARRANTY

	EXE300-10W-5K-V2	EXE600-20W-5K-V2
Light Source	LED SMD2835	LED SMD2835
Power Consumption	10W	20W
Colour Temp (CCT)	5000K	5000K
Lumen Output	1000Lm	2000Lm
CRI	>83 CRI	>83 CRI
Micro-Wave Sensor	OPTIONAL	OPTIONAL
Beam Angle	120 degree	120 degree
IP Protection Rating	IP 65	IP 65
IK Protection Rating	Ik08	Ik08
Overall Dimensions	L300*W90*H74mm	L600*W90*H74mm
Construction	AL+PC	AL+PC
Lens Type	Diffused	Diffused
Driver Type	ELV Internal Multivolt	ELV Internal Multivolt
Driver Input Voltage	10-32vDC	10-32vDC
Rated Lifespan	40,000+ hours	40,000+ hours



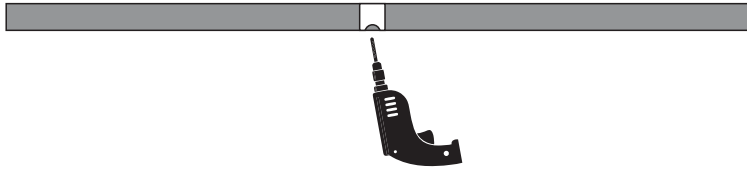
“Optional” Custom Mounting Bracket



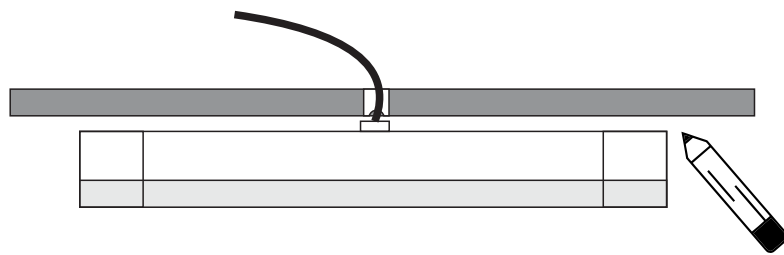
LU GEN4 ELV-BATTEN

BETTER LIGHTING - BETTER PERFORMANCE

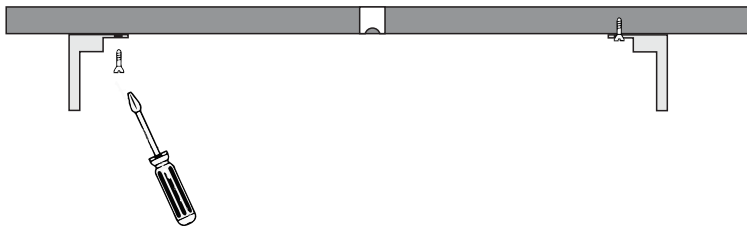
INSTALLATION USING "OPTIONAL" CUSTOM MOUNTING BRACKETS



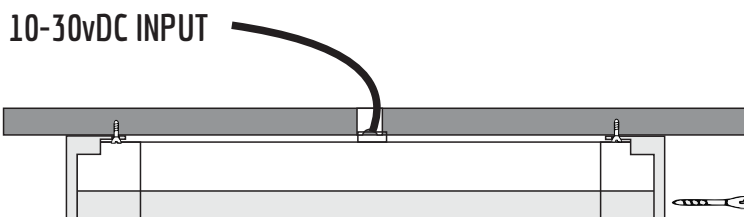
A. Drill 18mm hole for cable. This should be drilled in relation to the centre of light position.



B. With a marker, pencil the batten light edge for new bracket position.



C. Position brackets and fix to wall or ceiling with screws.



D. Attach batten light to new brackets with security screws provided.

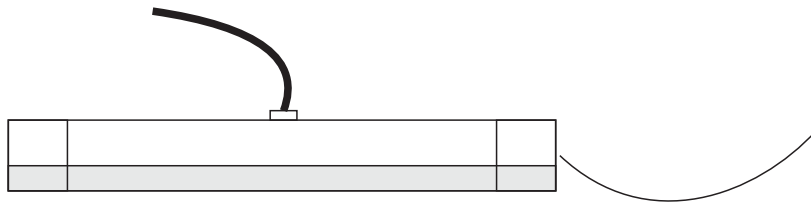
*(M4*40mm Torx security screw)*



LU GEN4 ELV-BATTEN

BETTER LIGHTING - BETTER PERFORMANCE

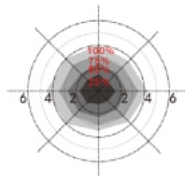
Optional Microwave + Dimming & Daylight Sensing



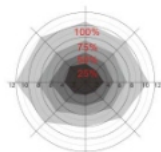
Remote Control Operation - sold separately

Button	Remarks
ON OFF	Press the "ON/OFF" button, the light goes to constant on/off mode, sensor is disable. Short press the "M/R" button, the sensor starts to work.
M/R	Short press "M/R" button, all parameters back to the last settings. Long press "M/R" button, all parameters back to factory settings.
10% 30%	Stand-by dim level Set up stand-by dim level: 10%/ 30%
25% 50% 100%	Detection Area Set up detection area: 25%/ 50%/ 100%
DIM+ DIM-	Short press "DIM+/DIM-" button to transmit dimming signal. The brightness of the lamp adjust at 5% per unit, from 50% to 100%.
0s 1min 30min +∞	Stand-by period Set up stand-up time: 0s/ 1min/ 30min/ +∞
5Lux 15Lux 50Lux Disable	Daylight sensor Set up daylight threshold: 5lux/ 15lux/ 50lux/ disable
5s 1min 5min 10min	Hold time Set up hold time: 5s/ 1min/ 5min/ 10min

Ceiling mounted height: 3m
Sensitivity: 100%/75%/50%/25%

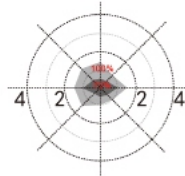


Normal moving (Speed:1m/s)

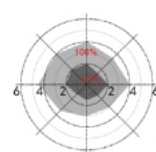


Slow moving (Speed:0.3m/s)

Ceiling mounted height: 4m
Sensitivity: 100%/75%



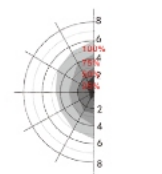
Normal moving (Speed:1m/s)



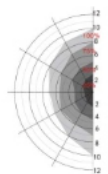
Slow moving (Speed:0.3m/s)

Wall mounting

Horizon mounted height: 2m
Sensitivity: 100%/75%/50%/25%



Normal moving (Speed: 1m/s)



Slow moving (Speed:0.3m/s)

DUALCOM TECHNOLOGY LTD
e. info@dualcom.co.nz
p. +64 9 218 5318
www.dualcom.co.nz



DUALCOM
TECHNOLOGY