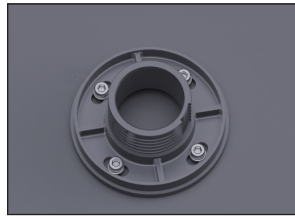
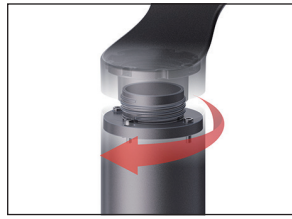




1



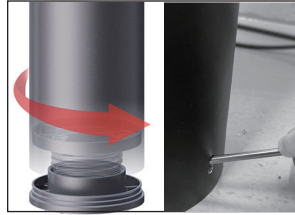
2



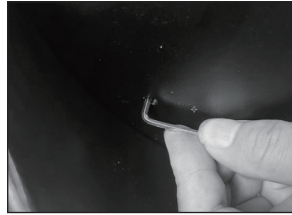
3



4



5



6

### How to install the light

- Step 1 : Drill 4 holes in on the surface according to the size as base dimension shows.
- Step 2 : Take off the base from the pillar and install it to the surface with 4 screws according to the required lighting direction. ( **VERY IMPORTANT STEP** )
- Step 3 : Screw the light head to the pillar properly. ( if the light head is separately packed . )
- Step 4 : Use the small screw driver to tighten the screw inside of light head to lock it tightly.
- Step 5 : Screw the light body to the base properly and tighten the small screw at the bottom of the pillar to avoid the loosing of light body.
- Step 6 : Use the allen wrench to push the button to turn on the light, then the light will work automatically from dusk to dawn.

### Regular Trouble Shot

PROBLEM	REASON	HOW TO SOLVE
Light is off	Switch is off	Turn on the on/off switch of light
	No direct sunshine	Move the light to the direct sunny area
	Continuous cloudy or rainy days	Light will back to work when sun returns
Short working time	There is debris on solar panel	Clean the solar panel
	Location problem	Move the light to the area with direct sunshine
	Continuous cloudy or rainy days	Light will be recharged when sun returns
	Battery life is expired	Replace with a new battery

# USER MANUAL

## of Solar Bollard Light

This solar bollard light offers a futuristic design for public space outdoor lighting applications where the benefits of IK10 vandal resistance are required. LifePO4 battery combined with an intelligent lighting program provides 100% power up to 280lm. The mission of solar bollard light is to comply with the requirement of the Dark Sky Association by limiting the upward light waste ratio (UWLR) to <1%. Limiting upward light reduces environmental light pollution and protects the view of our night sky for all.

We also offer this solar bollard light in a wildlife-friendly version retaining all the features of the original product. Wildlife-Friendly lighting is specifically designed to minimize the ecological impact on animals and insects.

### Specification

Solar panel	6.2Watts 5V MONO
LiFePO4 battery	38.4WH 3.2V
LED power	1.5W max
Luminous output(lm)	280lm
Motion sensor type	PIR
Color temperature	2700K~6000K
Protection rate	IP65 IK10
Light size	φ275mm H : 900mm
Certificates	CE, ROHS, IP65, FCC
Working program	2H 100% + 5H (30%+70%) + 4H 20% + 6H(10%+40%)
Warranty	5 years

### Accessories in package



Expansion Screw : 4 pieces

To tighten the base to ground.  
It is M6\*60



Allen Wrench : 1 piece

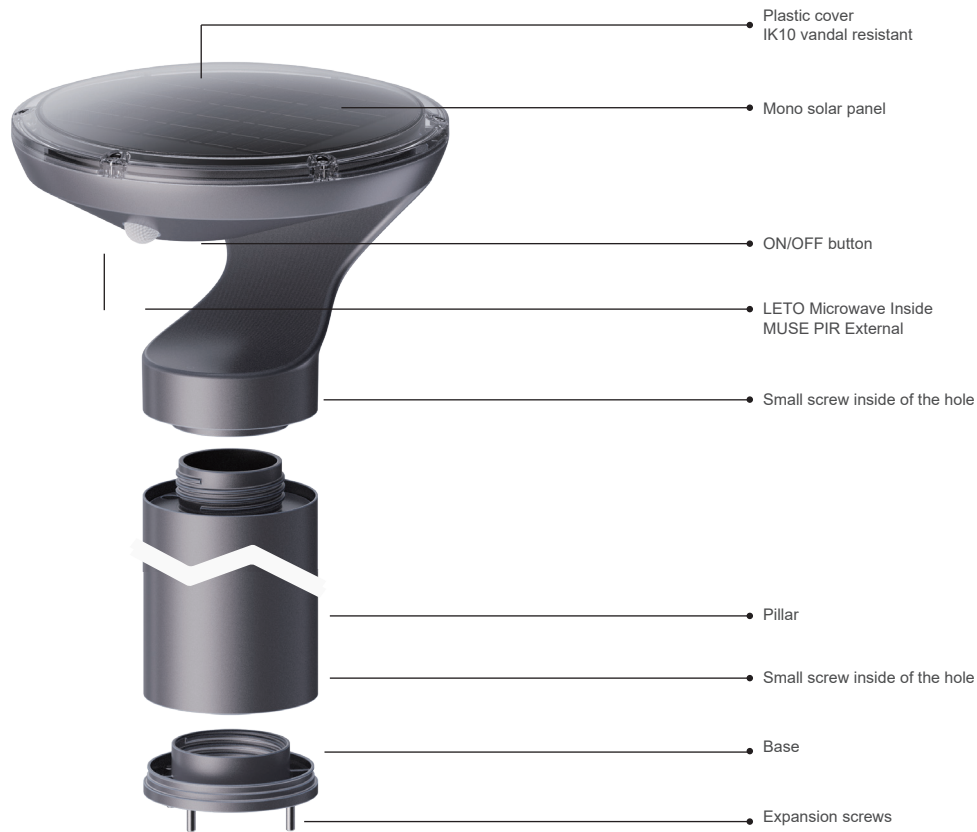
For tightening the two small screws of the light head and at the bottom of the pillar, It also can be used to turn the light ON/OFF.



Committed to a better world with quality green energy.

By combining the best technology of lithium batteries, solar panel, led source, and advanced control systems we offer the most reliable and high-efficiency solar lights



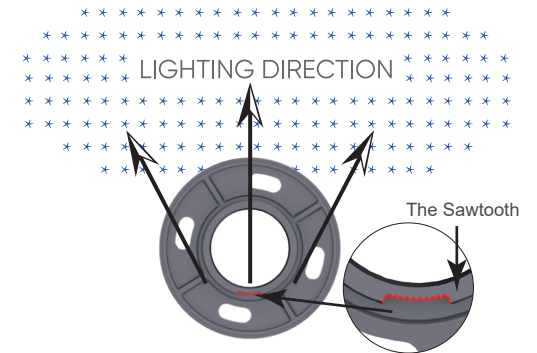
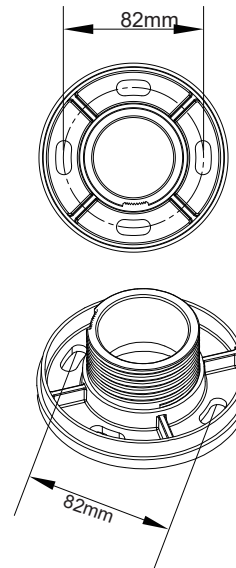


### ON/OFF Switch

The ON/OFF switch hole is hidden at the inner position of the light head, in order to reduce the possibility of unexpected operation when it is installed in a public area. Please use the allen wrench to push the on/off.



### Installation size & lighting direction



The installation direction of the base directly determines the direction of the lighting, The light will shine in the direction opposite to the sawtooth

### Remote control

