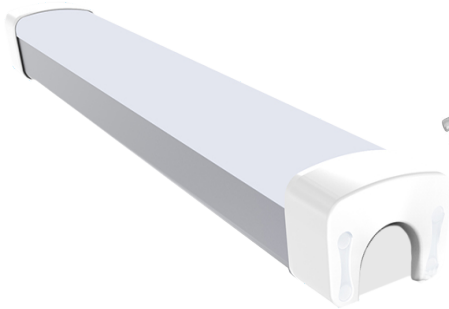


ELV BATTEN LIGHT - SENSOR + DIMMING FUNCTION



Remote Control Settings	Button	Remarks
-------------------------	--------	---------

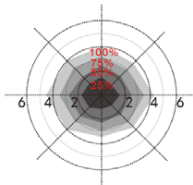
Remote Control Settings	Button	Remarks
	ON OFF	Press the "ON/OFF" button, the light goes to constant on/off mode, sensor is disable. Short press the "M/R" button, the sensor starts to work.
	M/R	Short press "M/R" button, all parameters back to the last settings. Long press "M/R" button, all parameters back to factory settings.
	10% 30%	Stand-by dim level Set up stand-by dim level: 10%/ 30%
	25% 50% 100%	Detection Area Set up detection area: 25%/ 50%/ 100%
	DIM+ DIM-	Short press "DIM+/DIM-" button to transmit dimming signal. The brightness of the lamp adjust at 5% per unit, from 50% to 100%.
	0s 1min 30min +∞	Stand-by period Set up stand-up time: 0s/ 1min/ 30min/ +∞
	5Lux 15Lux 50Lux Disable	Daylight sensor Set up daylight threshold: 5lux/ 15lux/ 50lux/ disable
	5s 1min 5min 10min	Hold time Set up hold time: 5s/ 1min/ 5min/ 10min



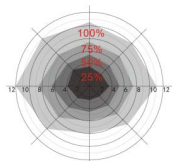
+

- Patent BiPolar Antenna Design
- Optimized for Metal Ceilings
- Microwave Sensor Technology
- Daylight Sensor
- Dimmable
- 2 Stage and 3 Stage Dimming
- IR Signal Input

Ceiling mounted height: 3m  
Sensitivity: 100%/75%/50%/25%

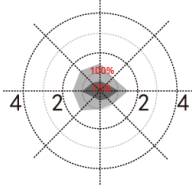


Normal moving (Speed:1m/s)

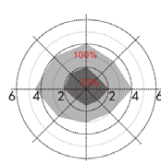


Slow moving (Speed 0.3m/s)

Ceiling mounted height: 4m  
Sensitivity: 100%/75%



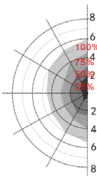
Normal moving (Speed:1m/s)



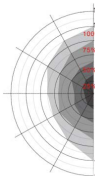
Slow moving (Speed 0.3m/s)

Wall mounting

Horizon mounted height: 2m  
Sensitivity: 100%/75%/50%/25%



Normal moving (Speed: 1m/s)



Slow moving (Speed 0.3m/s)